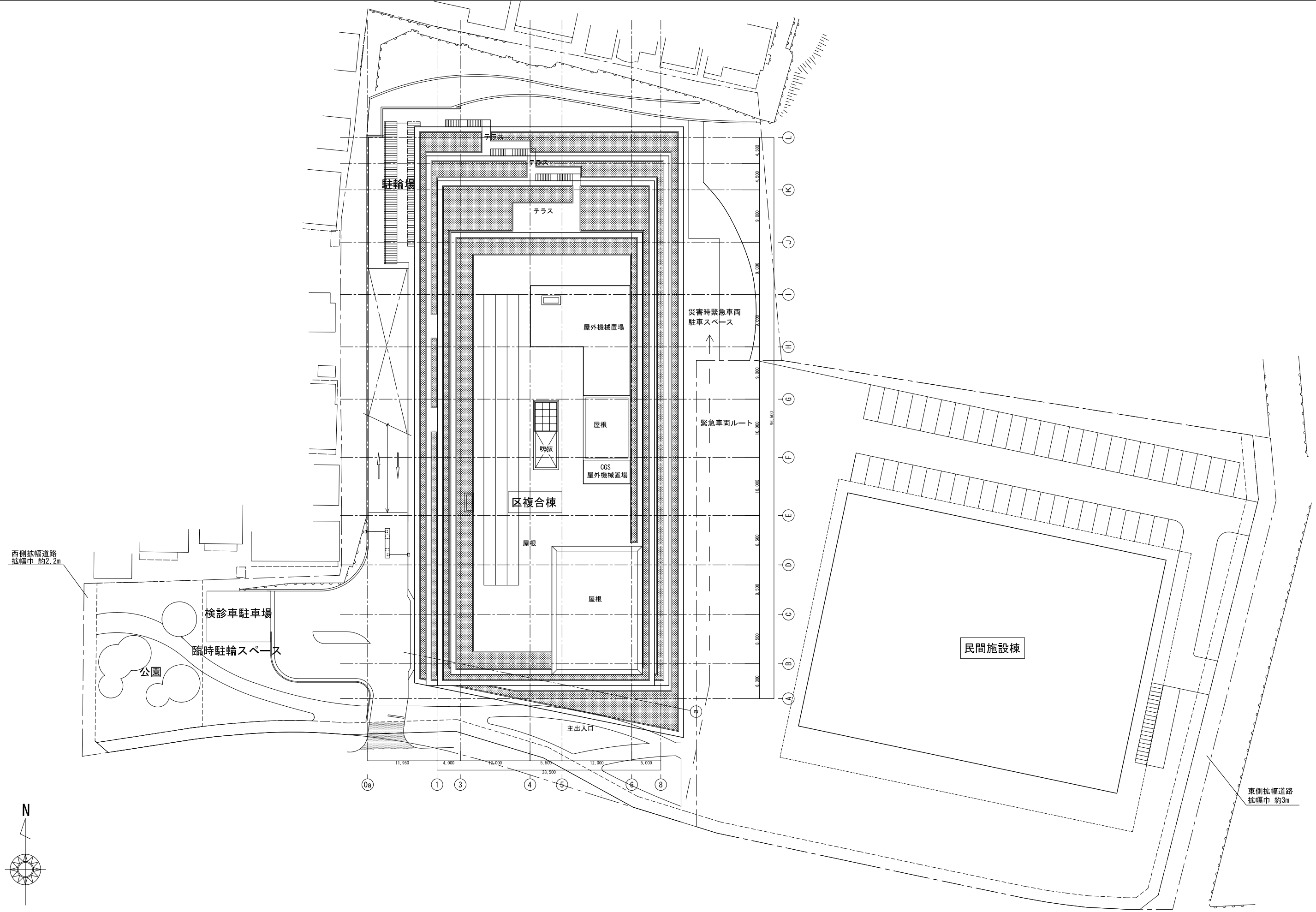
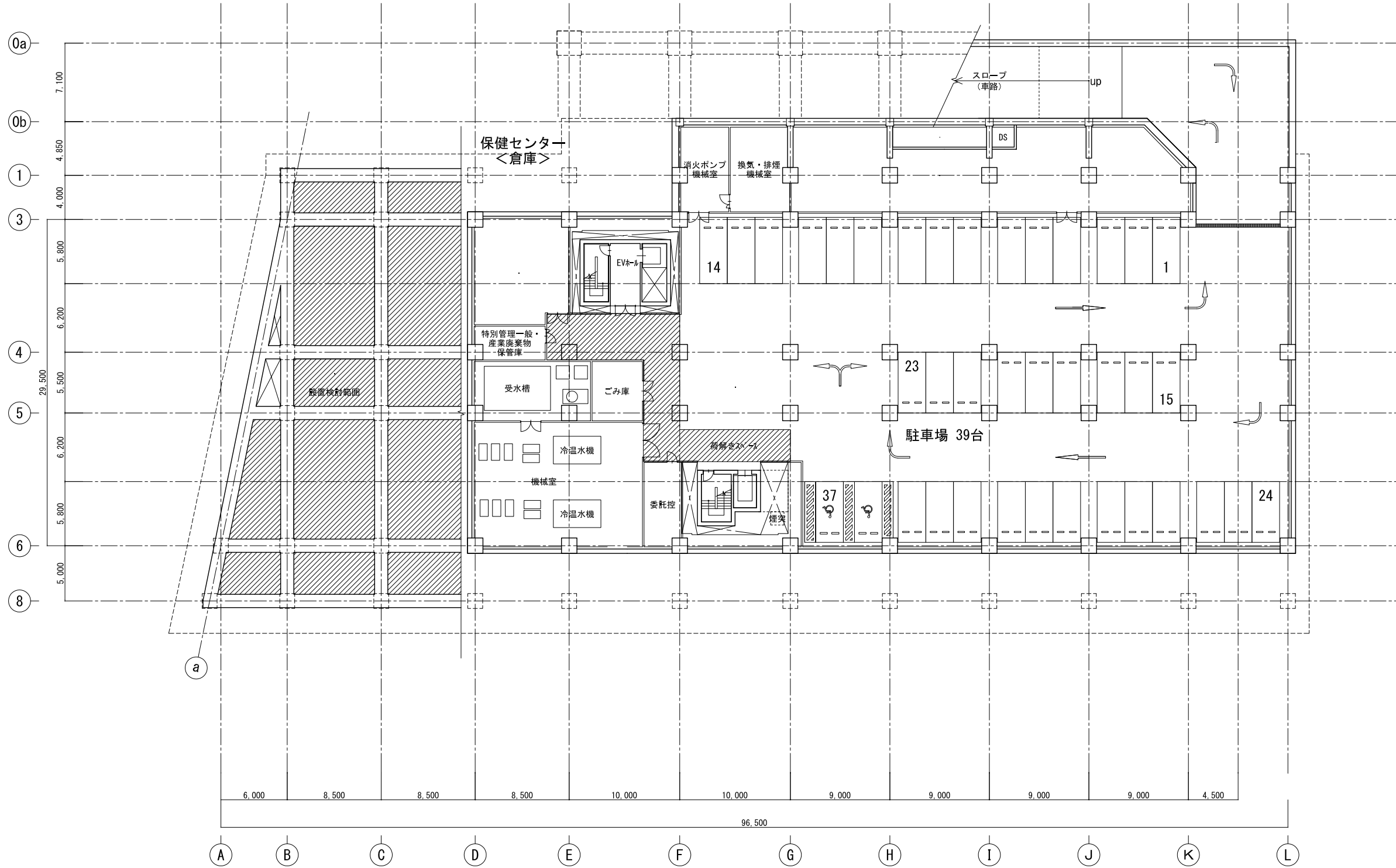


案内図

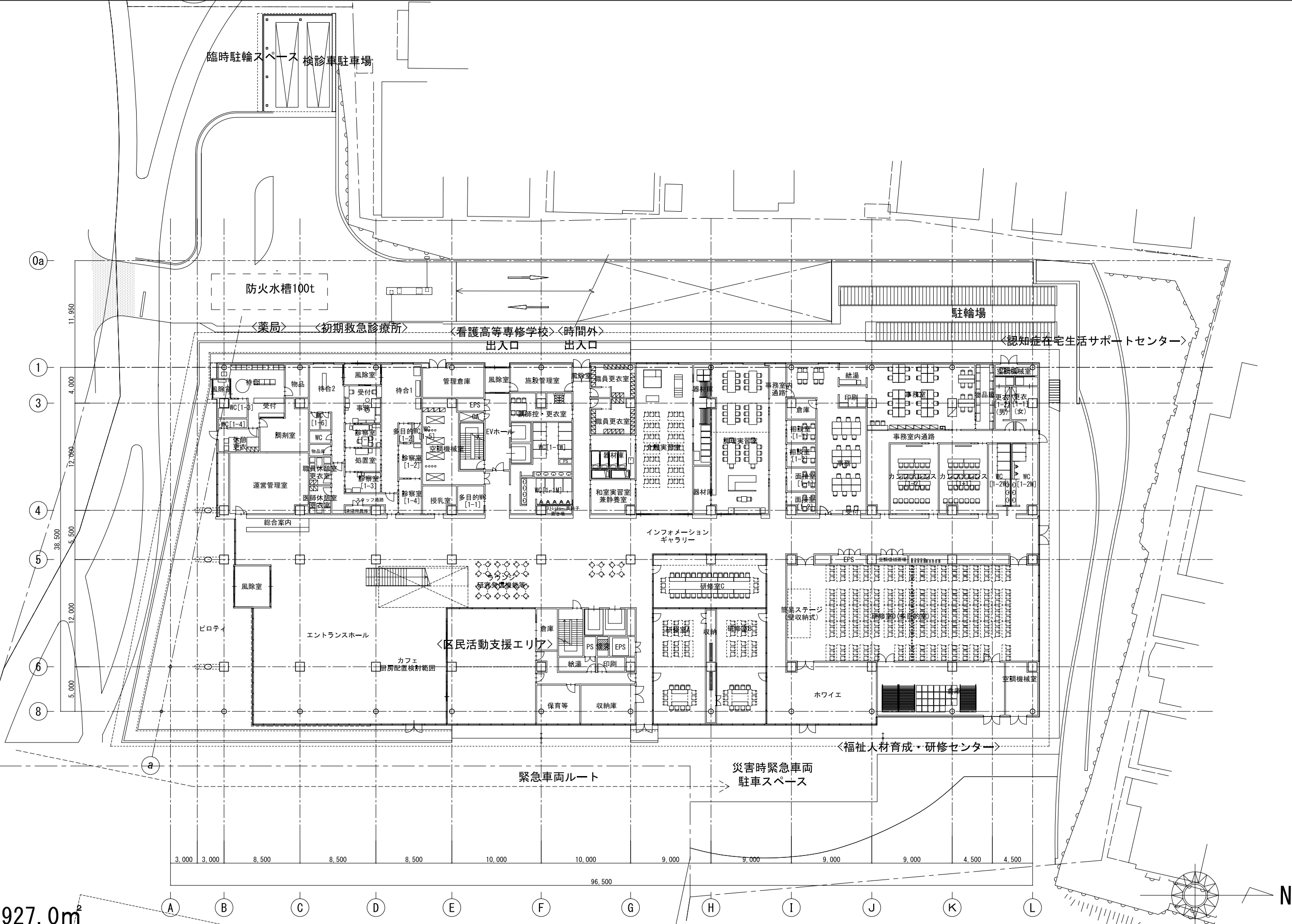


〔所在地〕 世田谷区松原 6-37

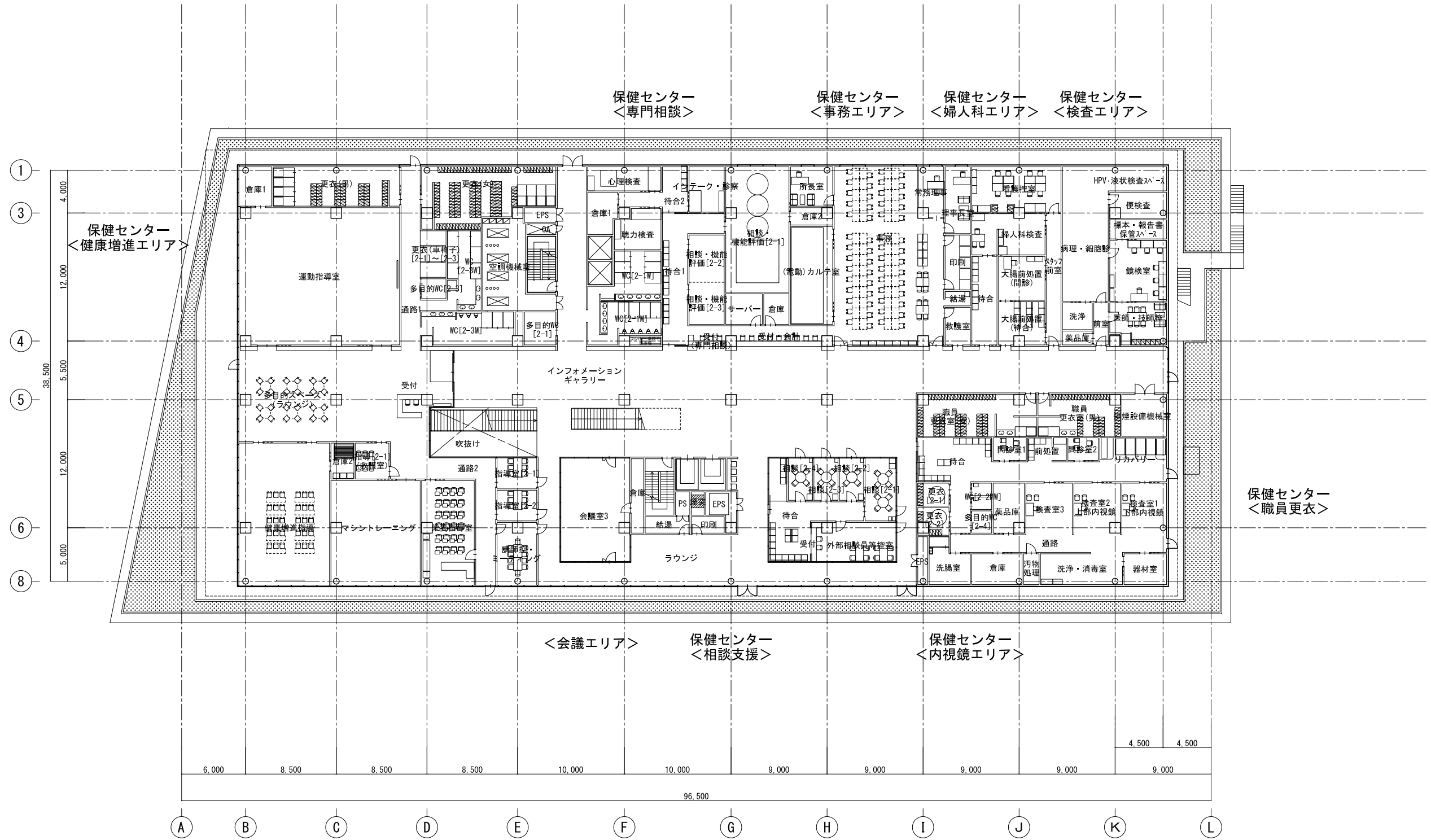




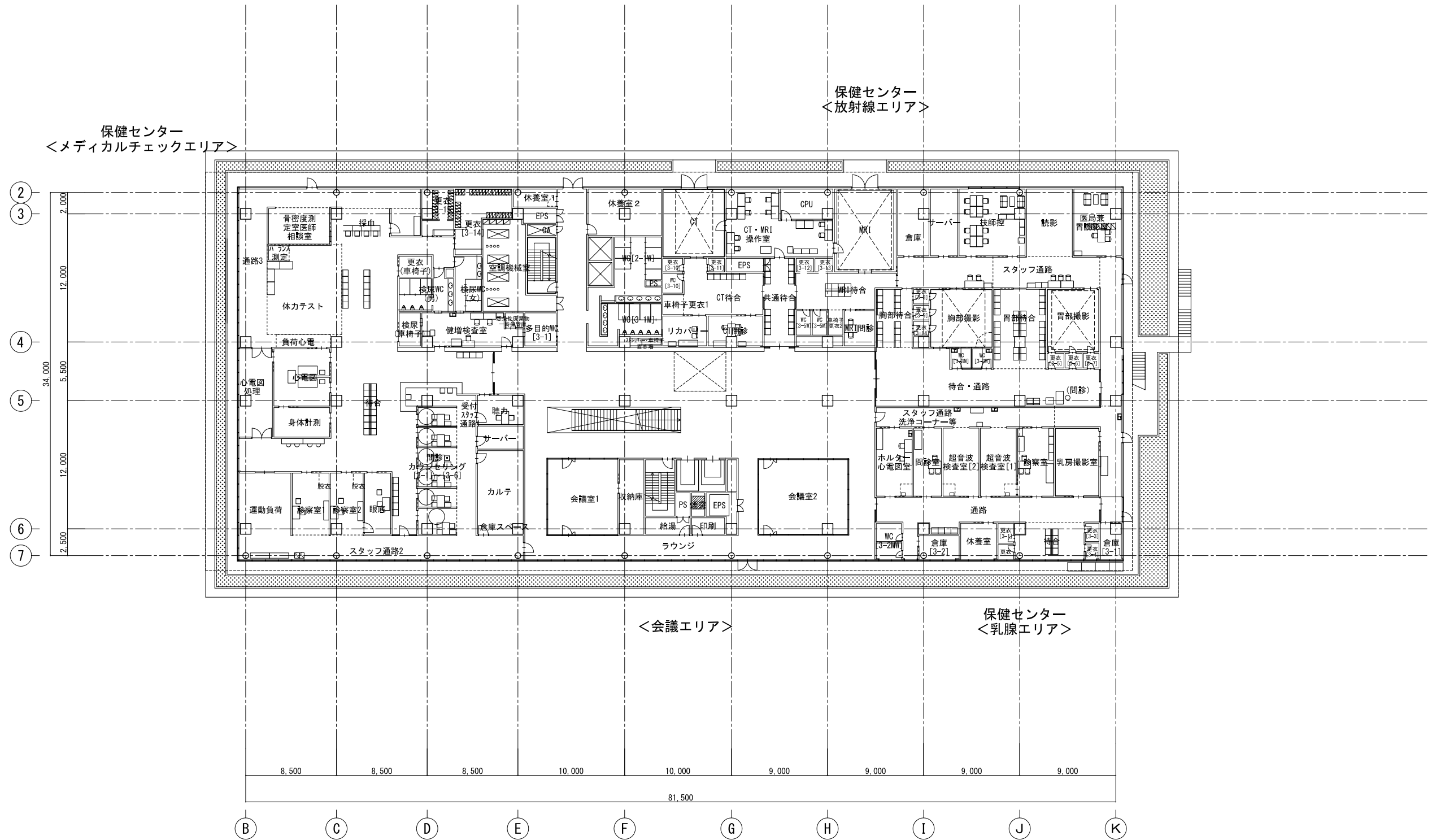
B1F 2,844.9m²



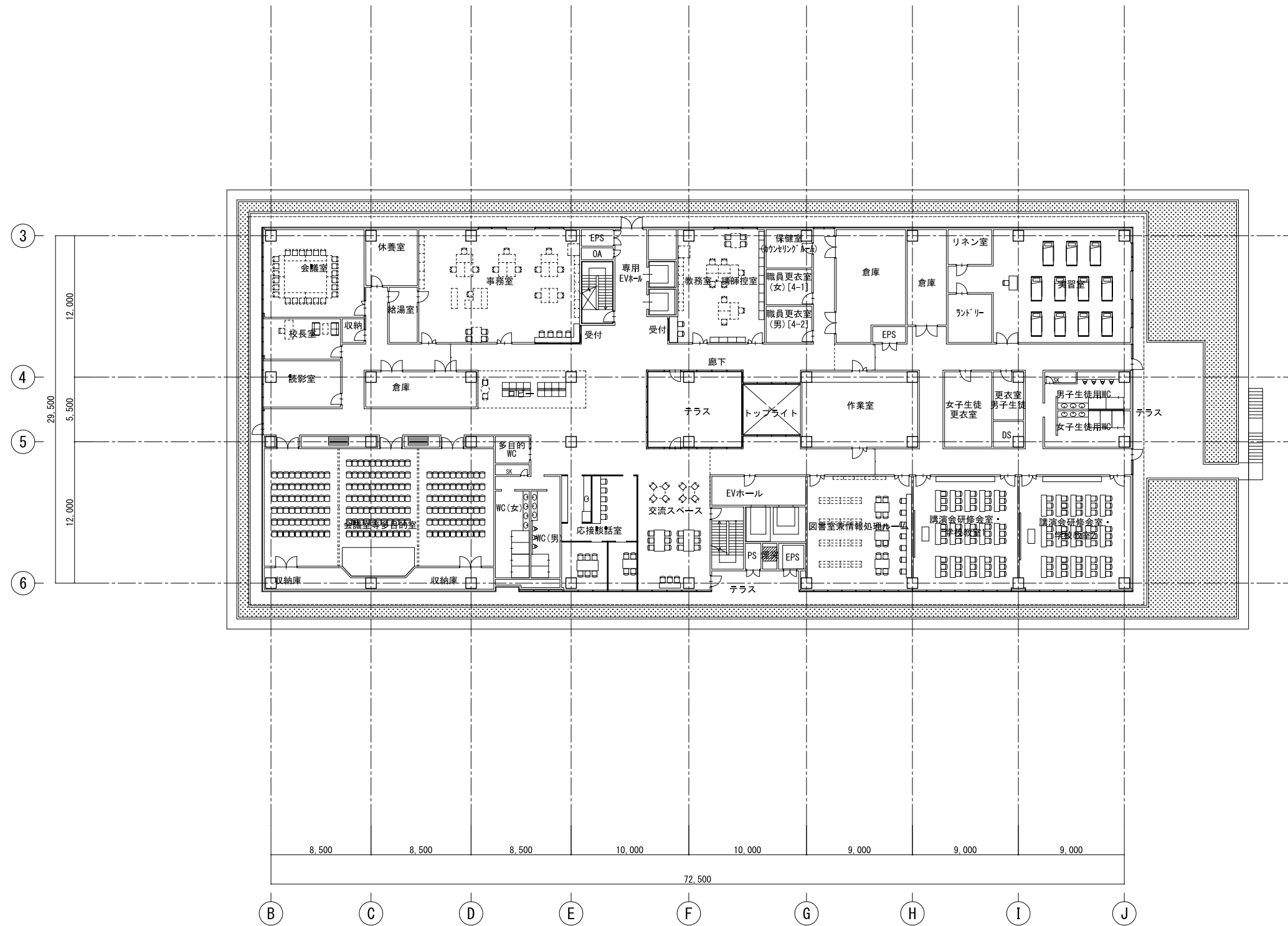
1F 3,927.0㎡
(検診車駐車場、駐輪場の面積を含まず)



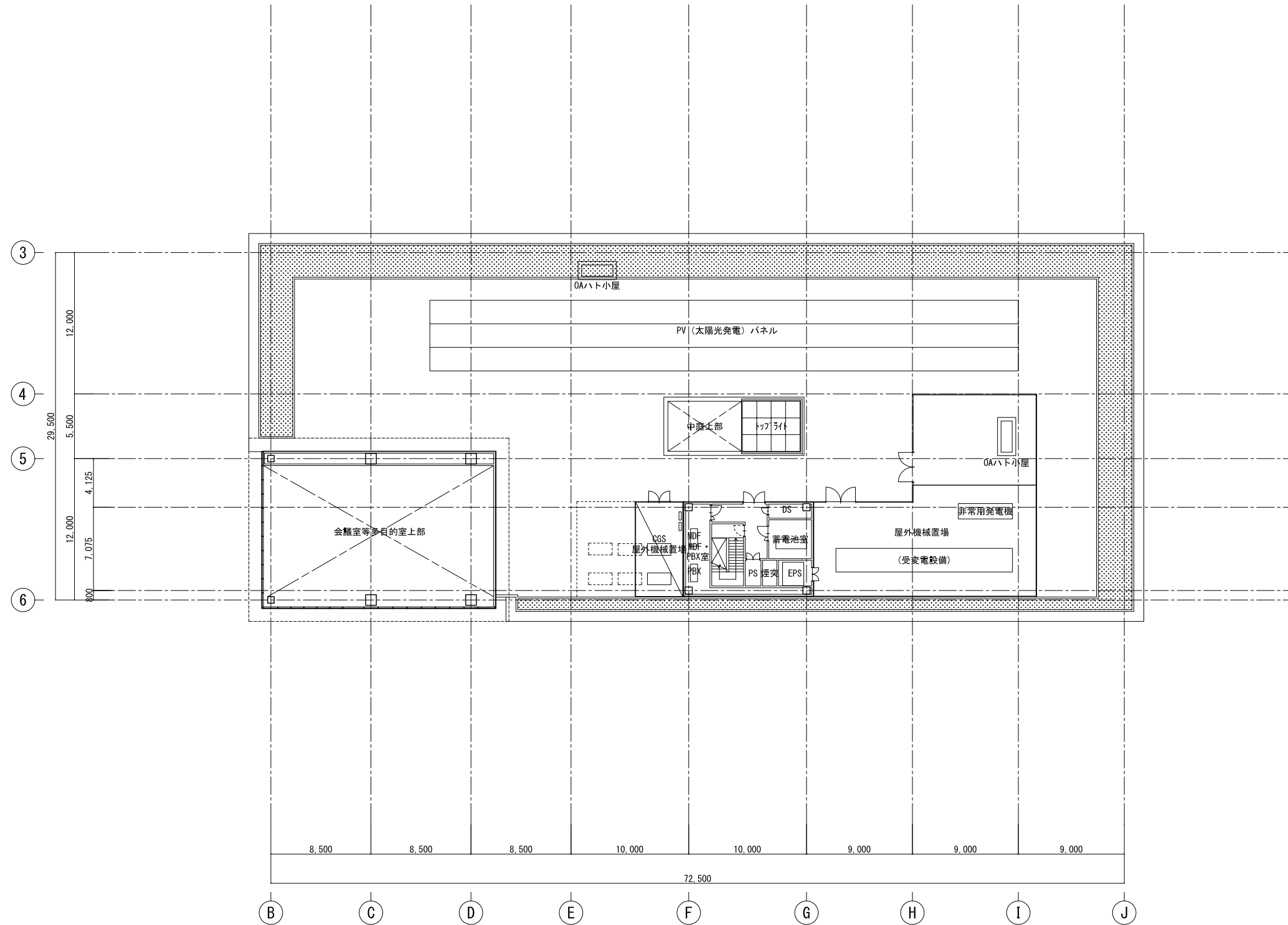
2F 3,461.5m²



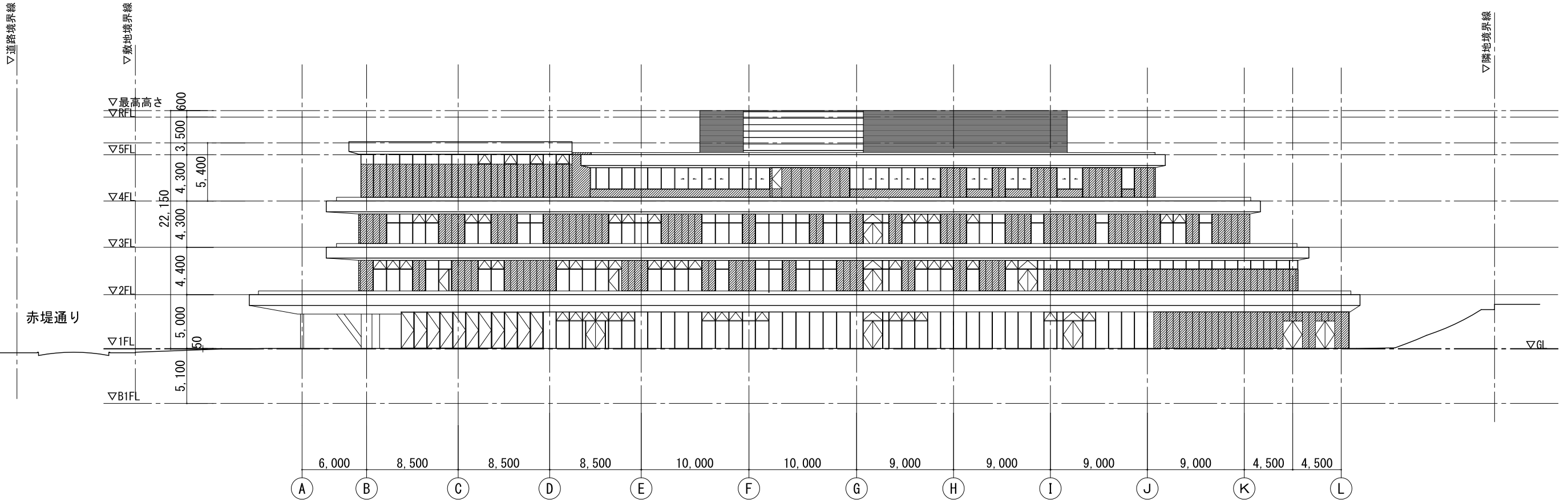
3F 2,918.3m²



4F 2,204.5m²



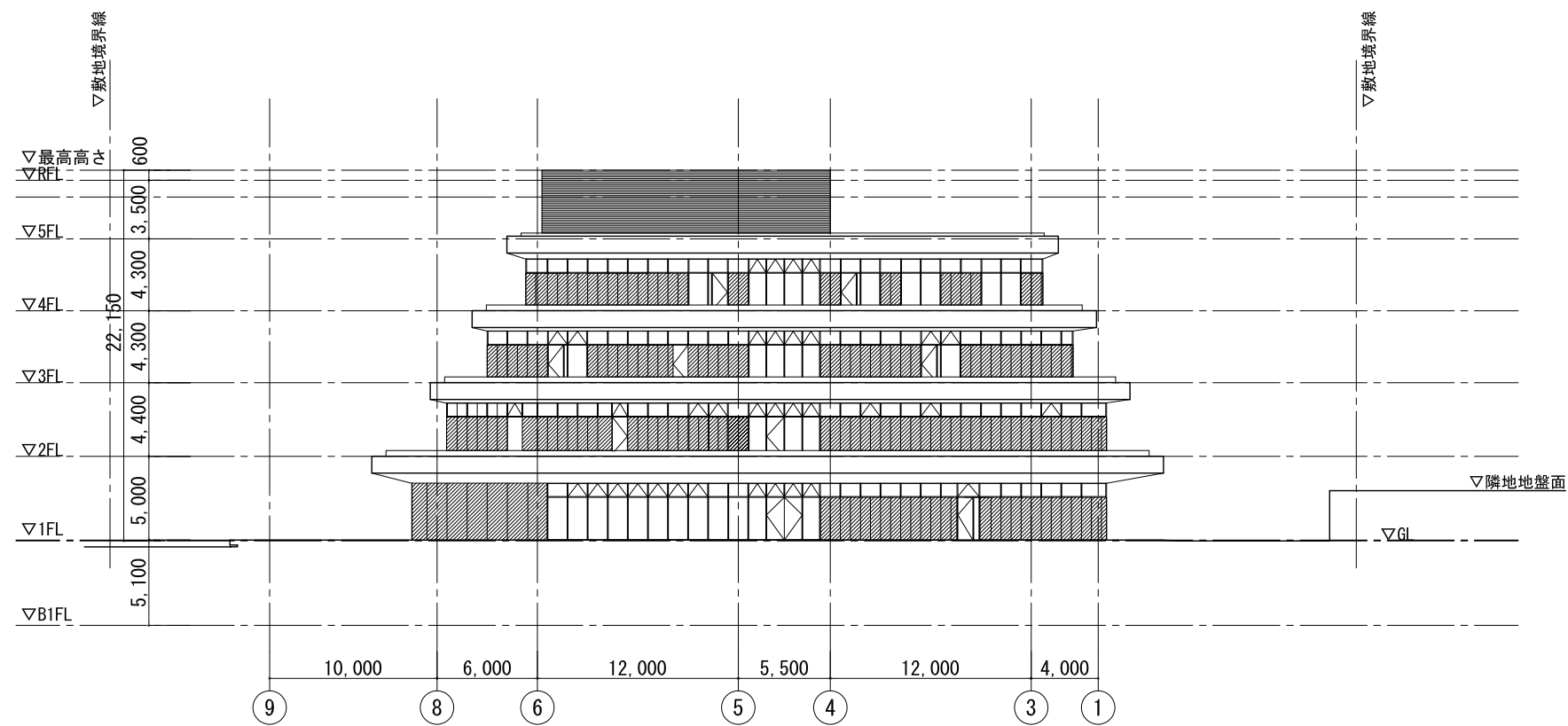
5F 98.6m²



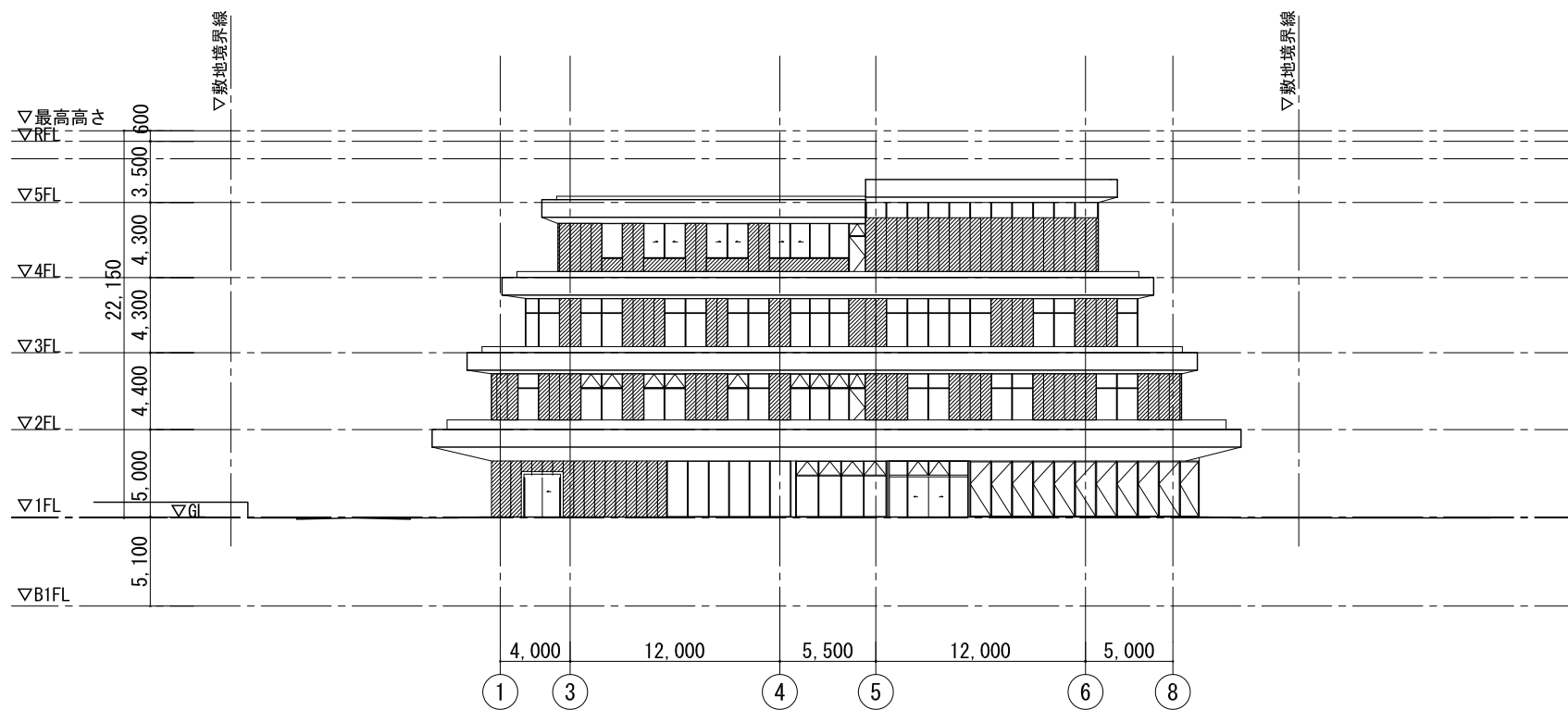
東側立面図



西側立面図



北側立面图



南側立面图